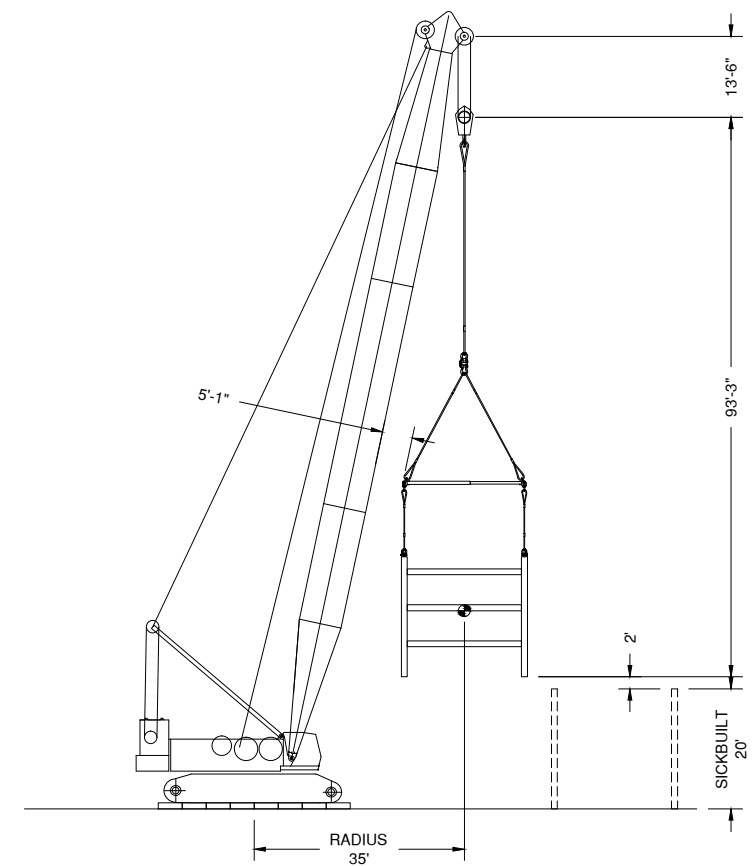


LIFT PROCEDURE:

- 1) POSITION CRANES AND BEAMS/MODULE STANDS AS PER PLAN VIEW.
- 2) POSITION MODULE AS SHOWN ON PLAN VIEW.
- 3) ATTACH RIGGING AS PER RIGGING DETAIL ON PAGE 2.
- 4) HOIST MODULE CLEAR OF AREA.
- 5) REMOVE TRAILER FROM AREA.
- 6) BOOM DOWN/SWING CRANES AS REQUIRED TO POSITION OVER TOP OF MODULE BEAMS.
- 7) LOWER MODULE ONTO BEAMS AND STANDS.
- 8) DISCONNECT RIGGING.



SAMPLE
DRAWING

CRANE/LOAD INFORMATION:		
CRANE	CRANE #1 300 TON CRAWLER	CRANE #2 300 TON CRAWLER
LIFTING CONFIGURATION	-	-
BOOM LENGTH	-'	-'
CRAWLER/OUTRIGGER SPACING	-'	-'
COUNTERWEIGHT	- LBS	- LBS
CARBODY COUNTERWEIGHT	- LBS	- LBS
LIFT RADIUS	-'	-'
CAPACITY	- LBS	- LBS
LOAD	- LBS	- LBS
BLOCK	- LBS	- LBS
LOAD LINE	- LBS	- LBS
AUXILLARY BLOCK	- LBS	- LBS
RUNNER	- LBS	- LBS
STOWED JIB	- LBS	- LBS
RIGGING	- LBS	- LBS
TOTAL	- LBS	- LBS
CRANE CAPACITY	- %	- %

NOTE:

- 1) MODULE WEIGHT = _____ LBS .
- 2) SEE SHEET 2 FOR RIGGING DETAIL.

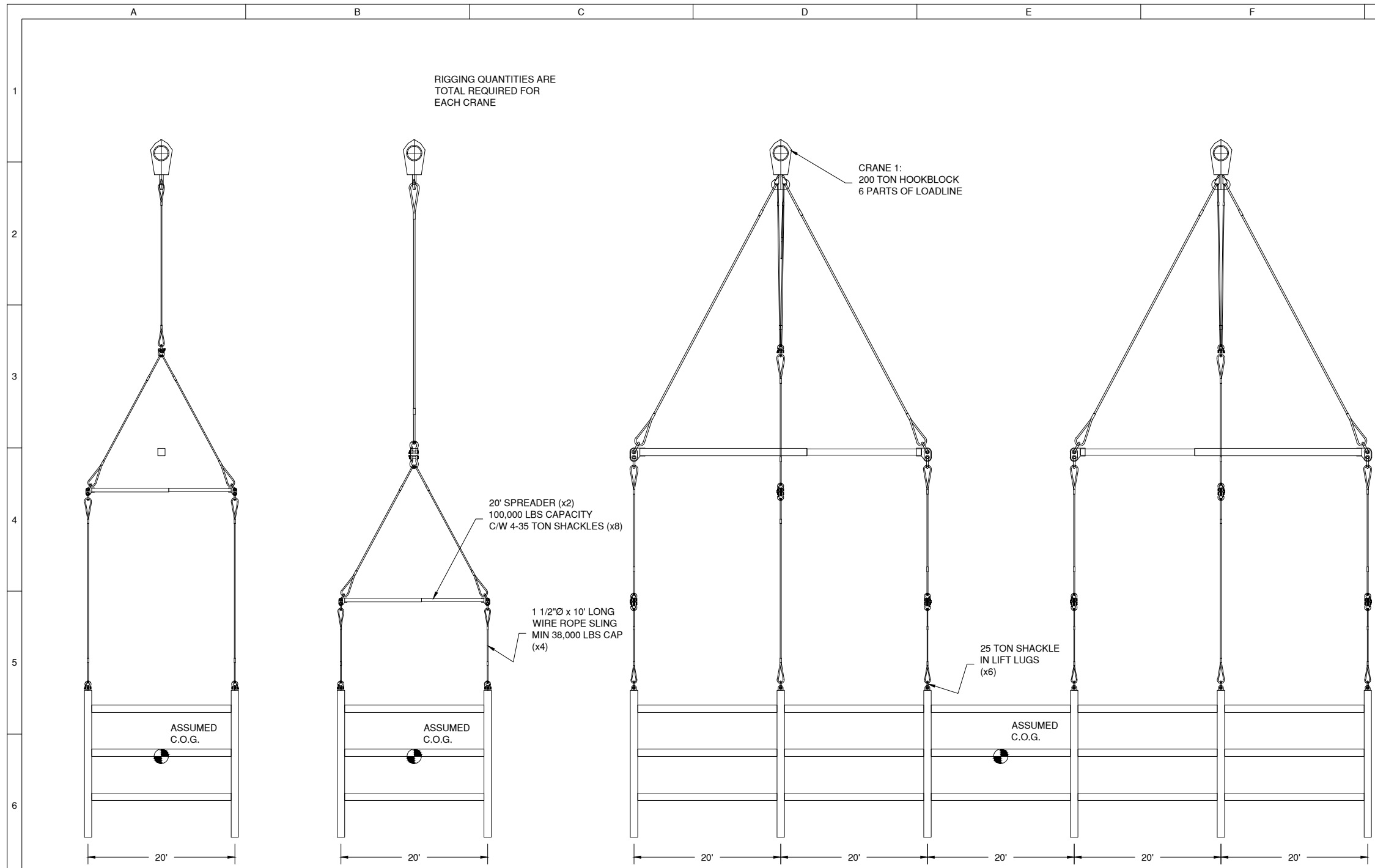
GENERAL NOTES:

- 1) CRANES AND RIGGING ARE TO BE USED AND MAINTAINED ACCORDING TO MANUFACTURER'S SPECIFICATIONS, AND ACCORDING TO ALL LOCAL CODES AND REGULATIONS.
- 2) ERECTION WEIGHT TO BE VERIFIED PRIOR TO LIFTING.
- 3) CRANES MUST BE LEVEL AND PLACED ON WELL COMPACTED MATERIAL.
- 4) STRUCTURAL INTEGRITY OF EQUIPMENT BEING LIFTED, BASED ON RIGGING ARRANGMENT SHOWN, IS THE RESPONSIBILITY OF THE MANUFACTURER.
- 5) ALL WIRE ROPE SLINGS SHALL BE MINIMUM IPS & IWRC.
- 6) OUTRIGGERS OR CRAWLERS ARE TO BE FULLY EXTENDED UNLESS NOTED OTHERWISE.
- 7) TAG LINES TO BE USED TO SECURE LOAD WHILE LIFTING.
- 8) LIFT TO BE PERFORMED UDER THE DIRECT SUPERVISION OF A QUALIFIED CRANE & RIGGING SUPERVISOR.
- 9) THE MAXIMUM AVERAGE WIND SPEED TO BEGIN A LIFT IS 15MPH(25KPH). MANUFACTURERS WIND SPEED RESTRICTIONS SHALL GOVERN AT ALL TIMES.

00	00-00-00	PRELIMINARY RELEASE	PH
REV	DD-MM-YY	DESCRIPTION	BY CHK

 2H ENGINEERING 9143 - 39 AVENUE EDMONTON, AB T6E 5Y2 (780) 988-6060	THIS DRAWING IS THE PROPERTY OF 2H ENGINEERING AND IS NOT TO BE REPRODUCED WITHOUT THE WRITTEN CONSENT OF 2H ENGINEERING. THIS DRAWING IS ONLY TO BE USED AS IT WAS ORIGINALLY INTENDED FOR AND MUST BE RETURNED UPON REQUEST.
---	--

CLIENT:	SAMPLE DRAWING		
PROJECT:	SAMPLE 2 CRANE LIFT DRAWING		
DRAWING TITLE:	LIFT STUDY FOR SETTING 100' LONG PIPERACK MODULE PLAN AND ELEVATION VIEWS		
PROJECT NUMBER:	DWG NUMBER:	SHEET:	REV:
00-00000	- L01	- 1 OF 2	00



RIGGING QUANTITIES ARE TOTAL REQUIRED FOR EACH CRANE

CRANE 1:
200 TON HOOKBLOCK
6 PARTS OF LOADLINE

20' SPREADER (x2)
100,000 LBS CAPACITY
C/W 4-35 TON SHACKLES (x8)

1 1/2"Ø x 10' LONG
WIRE ROPE SLING
MIN 38,000 LBS CAP
(x4)

25 TON SHACKLE
IN LIFT LUGS
(x6)

ASSUMED
C.O.G.

ASSUMED
C.O.G.

ASSUMED
C.O.G.

SECTION B-B
1/16" = 12"

SECTION A-A
1/16" = 12"

ELEVATION VIEW
1/16" = 12"

SCALE 1" (25.4mm)

RIGGING LIST (TYPICAL FOR EACH CRANE):			
QTY	DESCRIPTION	WEIGHT (LBS)	
		EACH	TOTAL
-	25 TON SHACKLE	35	-
-	35 TON SHACKLE	55	-
-	20' SPREADER BAR	1,250	-
-	1.5"Ø x 10' LONG WIRE ROPE SLING	50	-
TOTAL		-	-


NOTE:

- 1) MODULE WEIGHT = _____ LBS.
- 2) MODULE CENTER OF GRAVITY ASSUMED TO BE CENTER OF LOAD. SHACKLES OF EQUAL OR GREATER CAPACITY MAY BE ADDED AS REQUIRED TO LEVEL THE LOAD.
- 3) SEE SHEET 1 FOR PLAN VIEW AND LIFT PROCEDURE.

GENERAL NOTES:

- 1) CRANES AND RIGGING ARE TO BE USED AND MAINTAINED ACCORDING TO MANUFACTURER'S SPECIFICATIONS, AND ACCORDING TO ALL LOCAL CODES AND REGULATIONS.
- 2) ERECTION WEIGHT TO BE VERIFIED PRIOR TO LIFTING.
- 3) CRANES MUST BE LEVEL AND PLACED ON WELL COMPACTED MATERIAL.
- 4) STRUCTURAL INTEGRITY OF EQUIPMENT BEING LIFTED, BASED ON RIGGING ARRANGMENT SHOWN, IS THE RESPONSIBILITY OF THE MANUFACTURER.
- 5) ALL WIRE ROPE SLINGS SHALL BE MINIMUM IPS & IWRC.
- 6) OUTRIGGERS OR CRAWLERS ARE TO BE FULLY EXTENDED UNLESS NOTED OTHERWISE.
- 7) TAG LINES TO BE USED TO SECURE LOAD WHILE LIFTING.
- 8) LIFT TO BE PERFORMED UNDER THE DIRECT SUPERVISION OF A QUALIFIED CRANE & RIGGING SUPERVISOR.

00	00-00-00	PRELIMINARY RELEASE	PH
REV	DD-MM-YY	DESCRIPTION	BY CHK

 2H ENGINEERING 9143 - 39 AVENUE EDMONTON, AB T6E 5Y2 (780) 988-6060	THIS DRAWING IS THE PROPERTY OF 2H ENGINEERING AND IS NOT TO BE REPRODUCED WITHOUT THE WRITTEN CONSENT OF 2H ENGINEERING. THIS DRAWING IS ONLY TO BE USED AS IT WAS ORIGINALLY INTENDED FOR AND MUST BE RETURNED UPON REQUEST.
---	--

CLIENT: SAMPLE DRAWING

PROJECT: SAMPLE 2 CRANE LIFT DRAWING

DRAWING TITLE: LIFT STUDY FOR SETTING 100' LONG PIPERACK MODULE RIGGING DETAILS

PROJECT NUMBER:	DWG NUMBER:	SHEET:	REV:
00-00000	- L01	- 2 OF 2	00

SAMPLE DRAWING